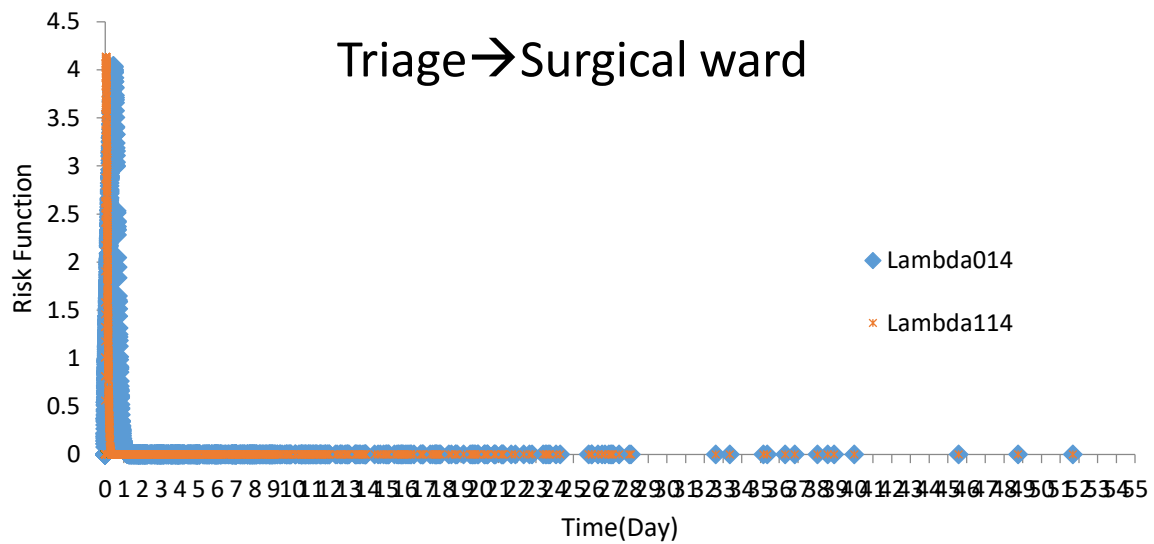
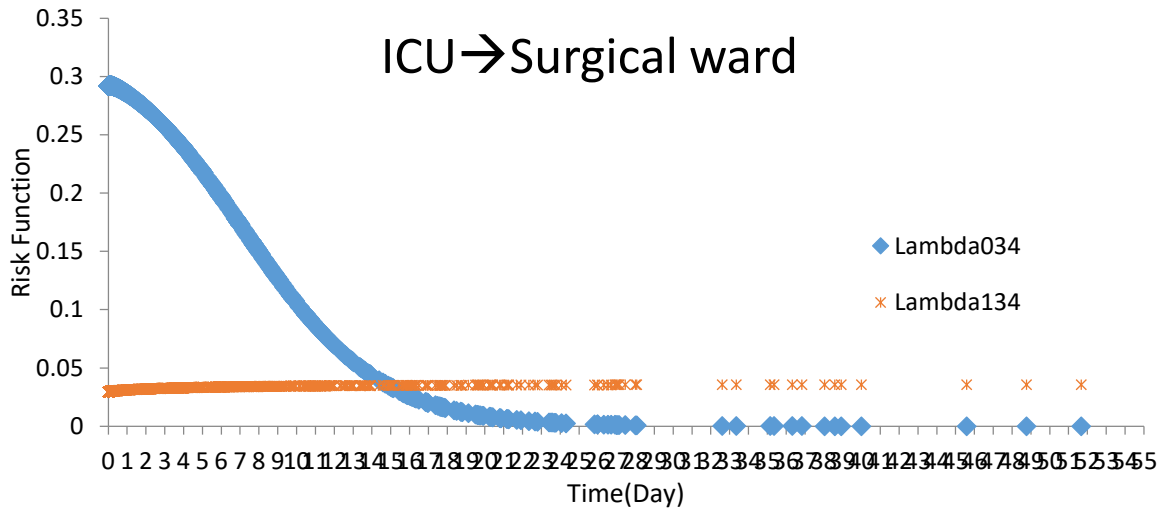


Figure S1: The density of 10 series of complete data with imputed values (in red) alongside the original data with missing values (in blue) for the five variables with the highest number of missing

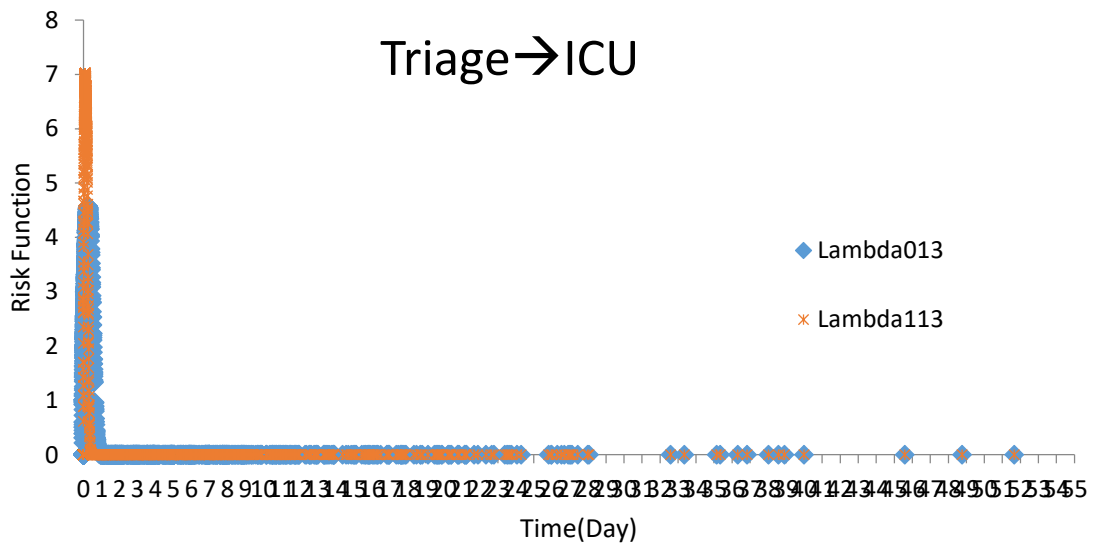
:



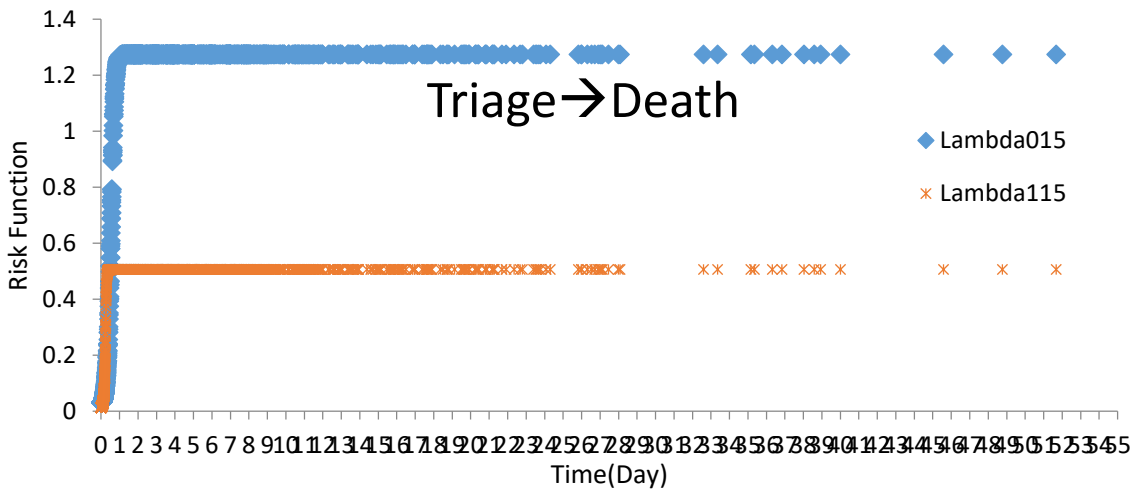
FigureS2: Relative Risk of semi-Markov Multistate model for the transition from Triage to Surgical ward



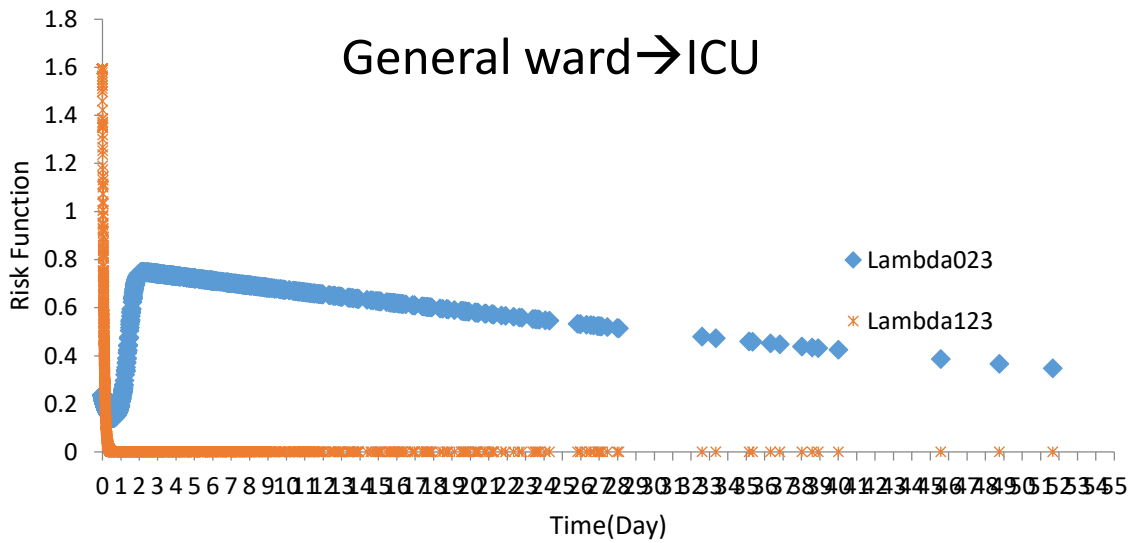
FigureS3: Relative Risk of semi-Markov Multistate model for the transition from ICU to Surgical ward



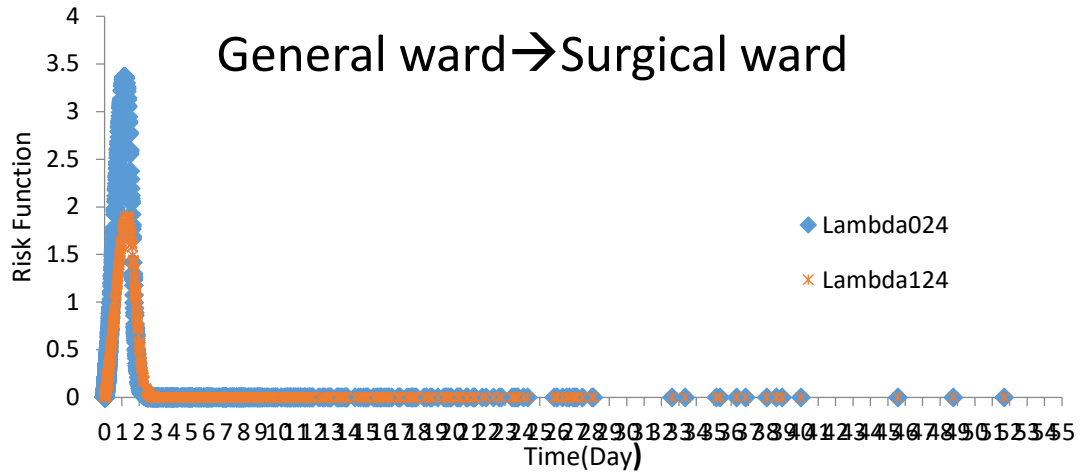
FigureS4: Relative Risk of semi-Markov Multistate model for the transition from Triage to Intensive care Unit



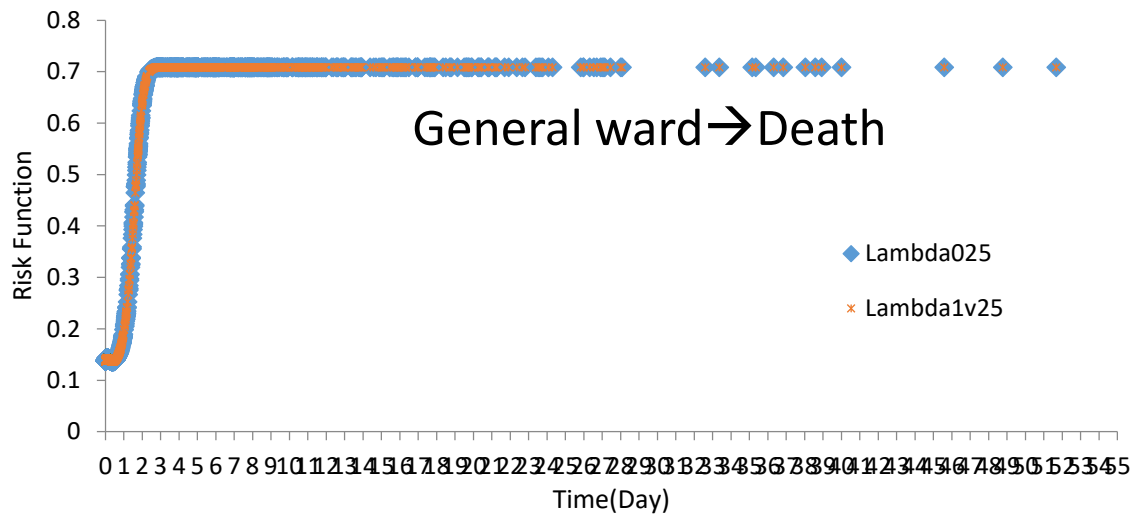
FigureS5: Relative Risk of semi-Markov Multistate model for the transition from Triage to Death



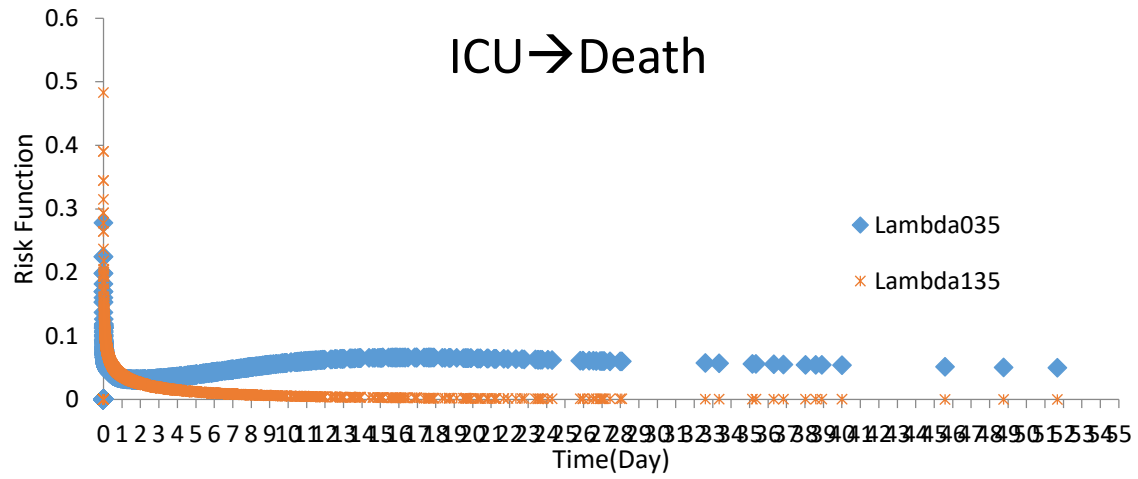
FigureS6: Relative Risk of semi-Markov Multistate model for the transition from General ward to ICU



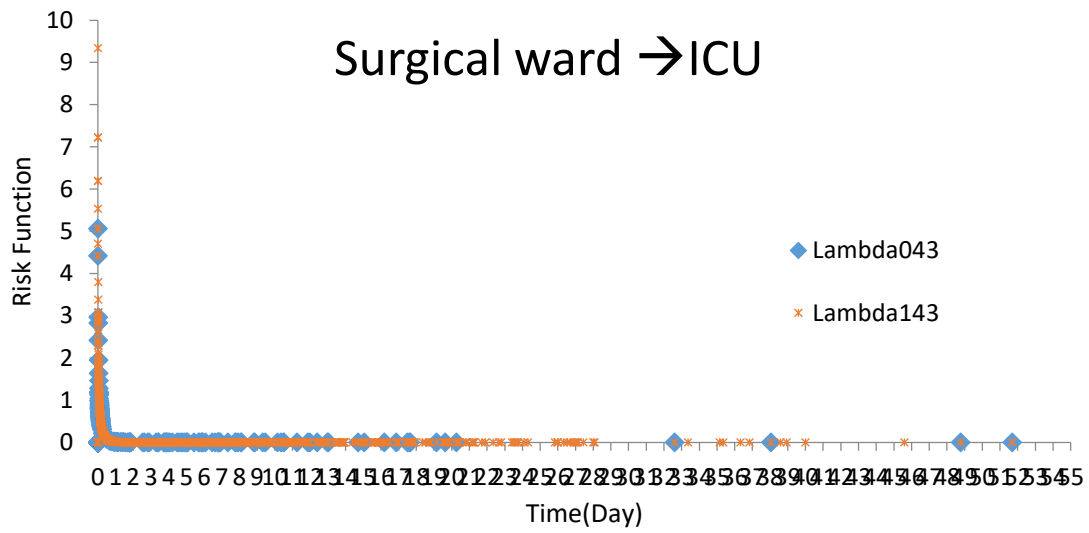
FigureS7: Relative Risk of semi-Markov Multistate model for the transition from General ward to Surgical ward



FigureS8: Relative Risk of semi-Markov Multistate model for the transition from General ward to Death

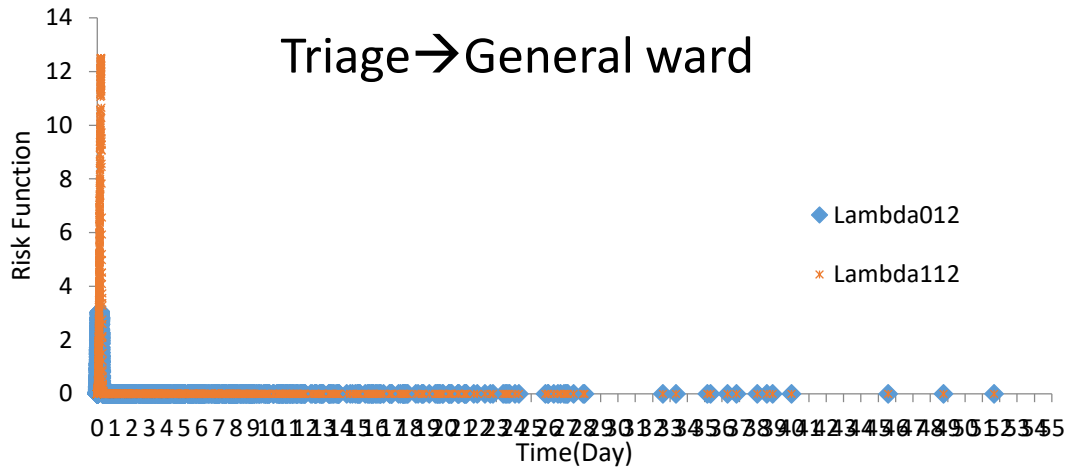


FigureS9: Relative Risk of semi-Markov Multistate model for the transition from ICU to Death



FigureS10: Relative Risk of semi-Markov Multistate model for the transition from Surgical ward to ICU





FigureS12: Relative Risk of semi-Markov Multistate model for the transition from Triage to General ward